

# ***PAP***



## **PROPELLER QUICK-RELEASE HUB**

user manual

# ELEMENTS INCLUDED

in the box



x1



x1



x1



x6



x6



x1



x1



x1



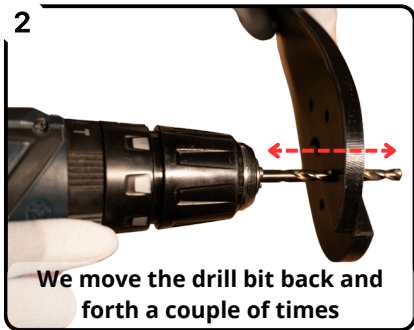
x1

# **We drill the propeller with a 6.3mm drill bit**

**1**

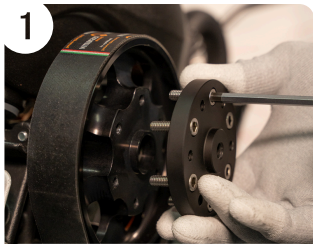


**2**



# Installation of the quick release on the pulley

1



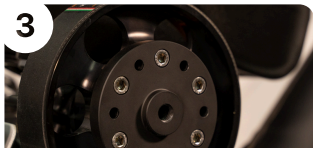
We align the support plate with the pulley

2



We insert the screws into their threads

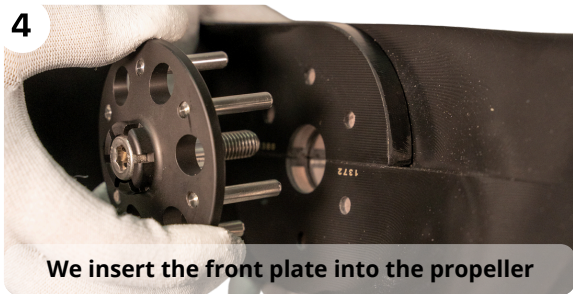
3



We tighten the screws in a cross pattern to 10Nm

# Installation of the front plate on the propeller

4



We insert the front plate into the propeller

5



Using our thumbs as  
assistance

6



Make sure it has entered  
all the way to the end

# Installation of the propeller on the paramotor





# PAPTEAM

**FOLLOW US ON:**



@papteamparamotors



PAP Team Paramotors



PAPTEAM Paramotors



**[www.papteam.com](http://www.papteam.com)**

**Propulsion Auxiliar Parapente, S.L.**

Urb. Bel-Air Water Garden Calle la moraleja Local 1

29680 - Estepona

952 88 48 11 - [info@papteam.com](mailto:info@papteam.com)